



Events with a difference

If you have a hungry mind and a taste for discovery, try us on for size. As an event venue we're neither too big nor too small. Specifically, we're licensed to have 90 seated guests and 100 standing. The result is that a large group feels intimate, and a small group feels bustling and energetic.

saltedegg



quincy
HOTEL • MELBOURNE

saltegg



saltegg

Born from the eclectic and vivid origins of South East Asian cuisine, Salted Egg is a dining experience that will transport you to another world. With a menu dominated by traditional Thai cuisine, it will stimulate and surprise all the senses. A destination for those with a curious appetite and a desire for culinary adventure, it's not just a place to dine, but a place where ideas are hatched.

Level 1

Breakfast 7am – 11am daily

Lunch 12 – 3pm Tuesday to Saturday

Dinner 5pm – late Tuesday to Saturday

Venue capacity 12 - 100 guests



saltedegg

Breakfast | 29pp including unlimited coffee | 4pp extra for a selection of fresh juices

Grain-free and goji berry granola w seasonal fruits and whipped coconut cream • GF/DF/VEG •

Young coconut and tapioca pudding w dragon fruit and hazelnut crumble • GF/DF/VEG •

Pandan waffle w poached ginger pears, whipped coconut butter and coconut sugar syrup • NF/SF •

Grilled lemongrass pork banh mi w fried eggs, pickled daikon and carrot, coriander and sriracha • NF/SF •

Spicy tempeh banh mi w cucumber, pickled daikon and carrot and shiso leaf • DF/NF/VEG •

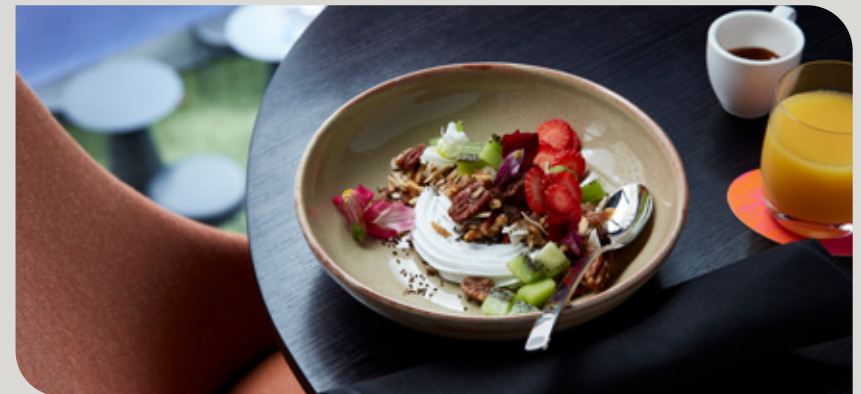
Breakfast tofu w sesame soy dressing, peanuts, saw tooth coriander and chilli oil • GF/DF/VEG •

Stir fried asparagus, broccolini, kale w spiced cashew cream, poached egg and dukkah • GF/DF/V •

Chilli scrambled eggs on sourdough w crab meat, sichuan oil and crispy salt bush • DF/NF •

Poached eggs on rye bread w tea smoked trout, spinach and béarnaise sauce • NF/SF •

Poached eggs on cassava rosti w red braised pork and béarnaise sauce • GF/NF/SF •



Sample menus; subject to change

saltedegg

Express Lunch | 35pp

Bites (per piece)

Pomelo betel leaf w caramelised coconut, chilli and mint • GF/DF/VEG •

Small Plates

Raw kingfish w green nahm jim, taro chips, finger lime and shiso • GF/DF/NF/SF •

Son-in-law eggs w yellow bean sauce, green mango and herb salad • NF/DF/V •

Stir Fries & Curries

Yellow curry of spiced pumpkin w shallot, Thai basil and pickled ginger • GF/NF/DF/VEG •

Roasted duck w crispy egg noodle, yellow bean sauce and pickled chilli • DF/NF •

Rice & Sides

Jasmine rice • GF/NF/DF/VEG •

Roti bread • NF/DF/VEG •



saltedegg

Taste of Asia | 65pp

Bites (per piece)

Pomelo betel leaf w caramelised coconut, chilli and mint • GF/DF/VEG •

Small Plates

Son-in-law eggs w yellow bean sauce, green mango and herb salad • DF/NF/V •

Raw kingfish w green nahm jim, taro chips, finger lime and shiso • GF/DF/NF/SF •

Large Plates

Massaman curry of lamb w kipfler potato, cucumber and chilli relish • GF/DF/SF •

Jungle curry of blue eye w snake bean, baby corn, kra chi and holy basil • GF/DF/NF •

Crispy pork w plum sauce, fried shallot, coriander and nahm pla prik • GF/DF/SF •

Rice & Sides

Jasmine rice • GF/NF/DF/VEG •

Roti bread • NF/DF/VEG •



saltedegg

Chef's Highlights | 75pp

Bites (per piece)

Coffin Bay oyster w red nahm jim, coriander and fried shallot • GF/DF/NF •

Smoked eel betel leaf w sawtooth coriander and peanuts • GF/DF •

Small Plates

Raw kingfish w green nahm jim, taro chips, finger lime and shiso • GF/DF/NF/SF •

Mekong chicken ribs w garlic chilli fish sauce, roasted rice and lime • GF/DF/NF/SF •

Prawn shu mai w smoked salmon roe, chilli oil and Sichuan salt • DF/NF •

Large Plates

Stir fried clams, prawn, squid and kingfish w curry powder and oyster mushrooms • GF/DF/NF •

Twice-cooked ½ duck w Chinese black vinegar sauce, ginger, coriander and chilli • GF/DF/NF •

Salt lamb ribs w chilli scuds, shallot, sawtooth coriander, roasted rice and lime • GF/DF/NF/SF •

Rice & Sides

Smoked long eggplant w chilli scud, sawtooth coriander and salted egg • GF/DF/NF •

Jasmine rice • GF/NF/DF/VEG •





The Q

Perched above the bustling city streets below, The Q is a place of duality. Exclusive, yet inclusive. A reimagined club lounge experience by day, and a pulsing energetic bar at night. A place of small plates and big experiences. Where you can enjoy a signature cocktail, Quincy Sling style, with a view over the Melbourne skyline.

Level 28

By Day 6am – 5pm daily

By Night 5pm – late Wednesday to Saturday

Venue capacity 20 – 150 guests



THE Q

Canapé items

40pp for 6 items | 50pp for 9 items | 55pp for 12 items

Coffin Bay oyster w red nahm jim, coriander & fried shallot GF, DF, NF

Pomelo betel leaf w caramelised coconut, chilli & mint GF, DF, VEG

Smoked eel betel leaf w sawtooth coriander & peanuts GF, DF

Silkin tofu w pickled ginger, herbs & chilli soy dressing GF, NF, DF, VEG

Son-in-law eggs w yellow bean sauce, green mango & herb salad NF, DF, V

Tuna & prawn sesame cups w chilli jam nahm jim, lemongrass & caviar DF, NF

Roti pizza w eggplant capsicum jaew & minted cashew cream DF, VEG

Mekong chicken ribs w garlic chilli fish sauce, roasted rice & lime leaf GF, DF, NF, SF

Roasted pork belly baos w turmeric pickles & hoi sin DF, SF

Crispy tempe baos w cauliflower sesame achar & sriracha mayo DF, SF, V

Vegetable spring rolls w pickled daikon & carrot, lettuce, mint & nuoc cham DF, NF, VEG

Fresh duck spring rolls w grilled pineapple, noodles, chilli soy dipping sauce DF, NF, SF

Cauliflower & shiso fritters w green chilli dipping sauce DF, NF, SF, V

Beef & lemongrass lettuce cups w sticky rice, galangal & chilli sauce DF, NF

Sample menus; subject to change



Substantial bowl items

15pp for 2 items | 25pp for 4 items

Roast duck & crispy rice salad w lychee, lemongrass, coriander & chilli jam dressing GF, DF

Tom yum fried rice w crab meat, pea eggplant, Thai basil GF, DF, NF

Yellow curry of spiced pumpkin w shallot, Thai basil & pickled ginger GF, DF, NF, VEG

Pad cha curry w tempeh w pea eggplant, baby corn & holy basil DF, NF, GF, VEG

Massaman curry of lamb w kipfler potato & cucumber & chilli relish DF, GF, SF

Sweets

Pandan ginger magnum w dark chocolate DF, GF, NF, V 6pp

Honey lemongrass profiteroles w peanut craquelin NF 5pp



Beverages Packages

Standard Beverage Package

2 hours 35pp | 3 hours 50pp | 4 hours 65pp

Premium Beverage Package

2 hours 45pp | 3 hours 65pp | 4 hours 85pp

Deluxe Beverage Package

2 hours 60pp | 3 hours 80pp | 4 hours 99pp

Soft drinks included

Sparkling water 3pp per hour

Cocktails

Inspectors	18
Rose St Market	18
Quincy Sling	18
Picked @ CERES	18



Beverages Packages

Standard Beverage Package

Sparkling

Até Sparkling Brut NV, South Eastern Australia

White - Choose 1

Até Pinot Grigio, South Eastern Australia

Até Sauvignon Blanc, South Eastern Australia

Red - Choose 1

Até Shiraz, South Eastern Australia

Até Cabernet Sauvignon, South Eastern Australia

Beer

Mornington Draught

Boags Light

Premium Beverage Package

Sparkling

Dalzotto Prosecco

White - Choose 2

Pikoura Sauvignon Blanc, Marlborough

Hesketh Pinot Grigio, South Australia

Alte Chardonnay, Orange

Apostrophe 'Stones Throw' Riesling

Apostrophe 'Stones Throw' Gewürtztraminer

Apostrophe 'Stones Throw' Pinot Gris

Rosé

Marquis de Pennautier Rose, Provence

Red - Choose 2

Bodegas Patrocinio Zinio Tempranillo

Hesketh Midday Somewhere Shiraz

Hesketh Pinot Noir, South Australia

Wildflower Cabernet Sauvignon, Western Australia

Beer

Mornington Draught

Moon Dog Old Mate Pale Ale

Boags Light

Deluxe Beverage Package

Sparkling

Piper Heidsieck 'Essential' Champagne

White - Choose 2

Adhoc 'Nitty Gritty' Pinot Grigio

Catalina Sound Sauvignon Blanc, Marlborough NZ

Oakridge 'Yarra Range' Chardonnay

Nick 'O Leary Riesling, Canberra

Rosé

La Linea Rose, Adelaide Hills

Red - Choose 2

In Dreams Pinot Noir, Yarra Valley

Hancock and Hancock Shiraz

Hentley Farm 'Villian and Vixen' Grenache

Ricasoli Barone Chiati Classico

Beer

Mornington Draught

Moon Dog Old Mate Pale Ale

Boags Light



Rooms

Our Guest Rooms

Immerse yourself in an environment punctuated by colour and cosy features. With plush beds, minibars, fast Wi-Fi, in-house movies and more, our guest rooms are maximised for work and play. Our 241-room hotel ranges from Club Rooms in soothing hues of jade, pink and blue for good fortune and joy.

Celestial Rooms (Standard)

Things are looking up. Because just like its namesake, Melbourne's Celestial Avenue is a bit more special than you might first think. Celestial Avenue is on the smaller scale for laneways in Melbourne's CBD, but its rich Asian history is what makes it stand apart. This small, slightly darkened lane was an integral part of the arrival of Asian immigrants in the mid-19th century, as it's here where the first Chinese lodging houses were built. Chinese heritage lives on in the exceptional Cantonese restaurant Supper Inn.

Offering:

- Premium Wi-Fi
- Samsung 55" LED Smart TV with Chromecast available
- Complimentary in-room movies
- Kevin Murphy amenities range
- Select tea range as well as premium coffee
- Pillow menu
- Mini-bar
- In room dining
- Self and valet parking options available

The Caledonian Room (Deluxe)

This Melbourne CBD laneway has a colourful graffitied look and artsy history making it a cultural icon to those in the know. In 2004, the now international music festival, St Jerome's Laneway, was born on Caledonian Lane. Take a stroll down these four or so metres, and you'll be following in the footsteps of Aussie Indie Pop royalty like Architecture in Helsinki and The Presets.

Offering:

- Premium Wi-Fi
- Samsung 55" LED Smart TV with Chromecast available
- Complimentary in-room movies
- Kevin Murphy amenities range
- Select premium tea range as well as premium coffee
- Pillow menu
- Mini-bar credit included in rate
- In room dining
- Self and valet parking options available



Celestial Room



Caledonian Room

Rooms

Hosier Club Rooms & Suites

Think of Melbourne's urban art scene and hidden graffiti laneways, and you instantly think of iconic Hosier Lane in the heart of the city. Walk down the famous bluestone laneway and admire the street art that has made the Melbourne urban art scene known across the globe. This famous laneway also has the honour of being the "area's densest collection of spray-painted masterpieces". Take a wander on your own or join one of the popular walking tours to find out more about the artists and their work. Since Hosier Lane is also a 'living gallery', you might even spot an artist in action!

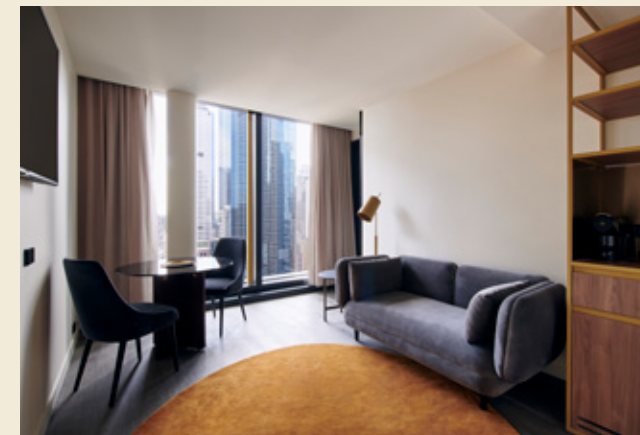
Offering:

- Premium Wi-Fi
- Samsung 55" LED Smart TV with Chromecast available
- Additional minimum 43" TV in bedroom*
- Complimentary in-room movies
- Expanded Kevin Murphy amenities range
- Select premium tea range as well as premium coffee
- 6am – 6pm access to The Q, serving all day refreshments
- VIP lounge check-in
- Welcome card
- Turn-down service
- Mini-bar credit included in rate
- Pillow menu
- In room dining
- Self and valet parking options available
- Bathrobes and slippers

*Q Club Suite only



Hosier Club Room



Hosier Club Suite Lounge



Hotel

Hotel Reception

We know how to make an entrance with an eye-catching curved staircase and bold accents to set the scene for your stay. Central to the lobby is SingSong; street eats and drinks inspired by Asian hawker stalls to orient you in our East-meets-West ambience.

Communal Spaces

The rooftop pool is the place to be with a lofty outlook over the Melbourne CBD or balance your body in our onsite gym.

Elevate your workspace on the Club Levels and stay connected with fast Wi-Fi. The Q Club Lounge with bar and terrace provide a relaxed spot to work, meet, rest or play with all-day eats and beats.

Our Team

We know the personalities you meet can make your stay. Our passionate and approachable team are available 24/7 for all your individual needs – big or small.

Hidden Gems

When it's time to switch from work to play mode or vice versa, Quincy Melbourne offers end-to-end CBD access thanks to the Collins and Flinders Street tram lines situated nearby. Our team know the hidden gems to visit, including the best theatre and entertainment venues in town, and the hidden spots that offer the absolute best of the city.

In the Vicinity

Melbourne Aquarium	140 m
Southern Cross Station	500 m
Sky Bus and Regional Coach Terminals	
Melbourne Convention and Exhibition Centre (MCEC)	600 m
Docklands Business Precinct	750 m
Marvel Stadium	1 km
Festival Hall	1.7 km
Icehouse	2.7 km
Easy access to:	
MCG	2.4 km
Tennis Centre	2.6 km
AAMI Park	2.7 km
Aus Motor GP track	3.9 km





509 Flinders Lane, Melbourne VIC 3000
+61 3 9492 7400
eat@saltedegmelbourne.com.au
QuincyMelbourne.com



quincy
HOTEL • MELBOURNE

The logo for Quincy Hotel Melbourne features the word "quincy" in a stylized, lowercase, white font with a small orange dot above the 'i'. Below it, the words "HOTEL • MELBOURNE" are written in a smaller, uppercase, white font.